

CAMDEN POINTE II OF CAROLINE

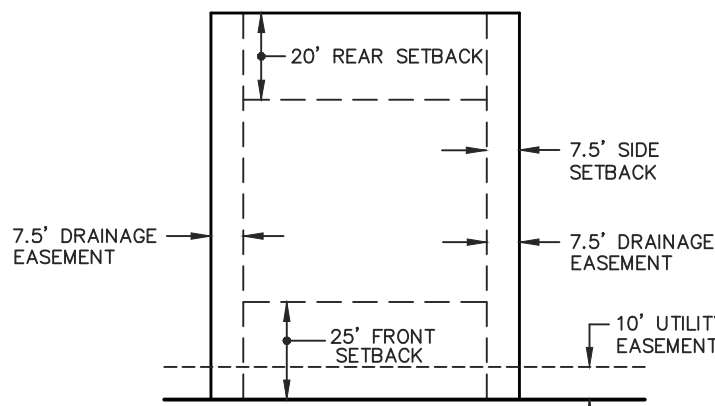
SITUATED IN THE
 NORTHWEST 1/4 OF THE NORTHEAST 1/4 AND THE
 NORTHEAST 1/4 OF THE NORTHWEST 1/4 OF SECTION 14
 AND THE SOUTHWEST 1/4 OF THE SOUTHWEST 1/4 AND THE
 SECTION 11, TOWNSHIP 8 NORTH - RANGE 1 EAST
 MADISON COUNTY, MISSISSIPPI

PLATTED & SURVEYED BY
 H D LANG AND ASSOCIATES, INC.
 ENGINEERS / LAND SURVEYORS
 4099 NORTH STATE STREET
 JACKSON, MISSISSIPPI
 (601) 362-4886

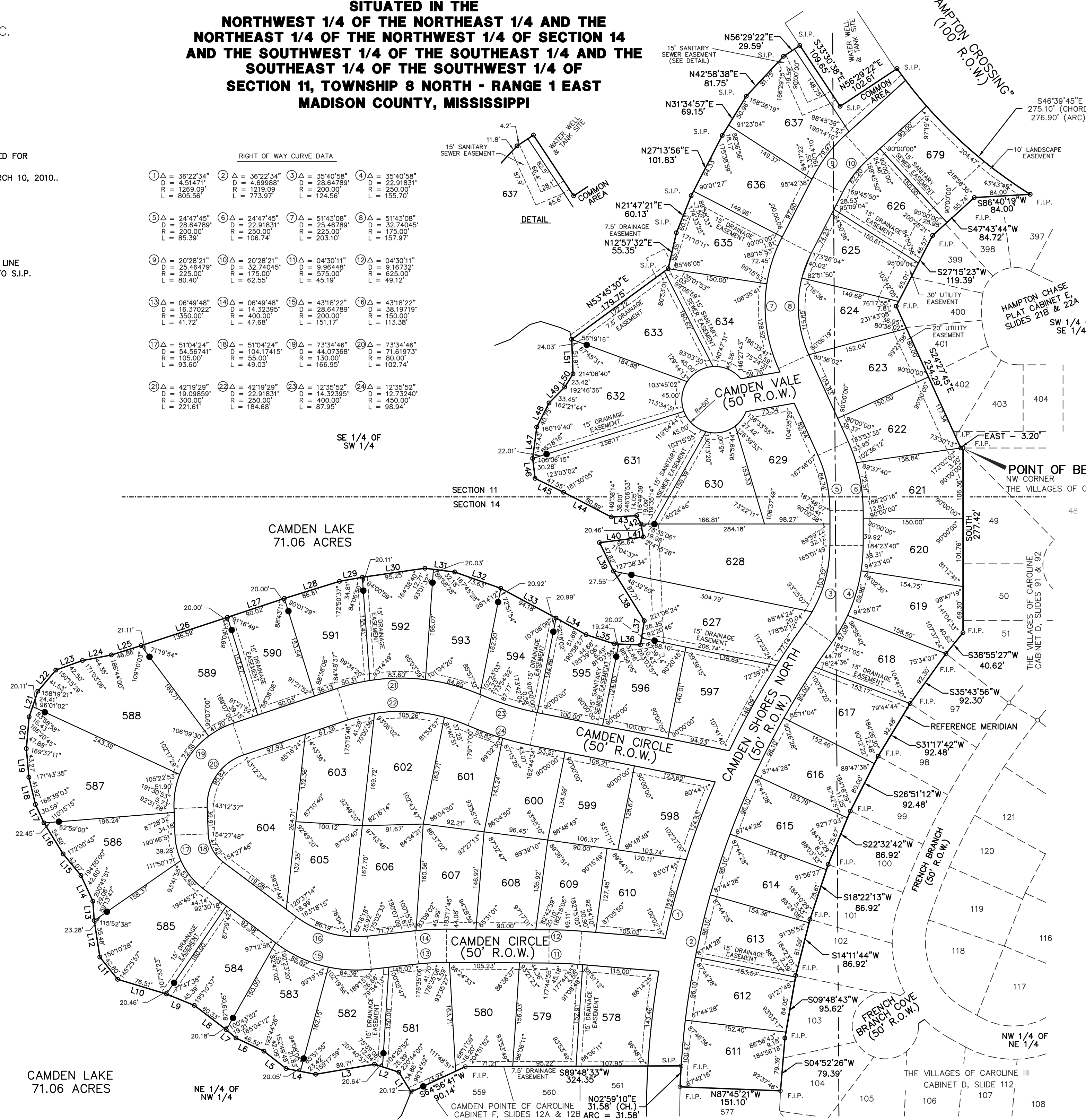
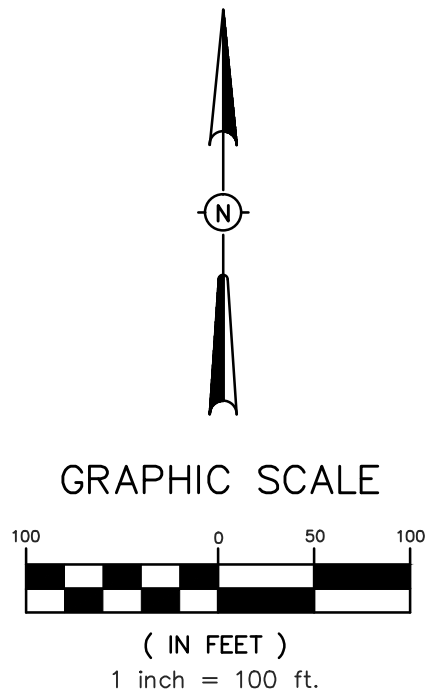
- NOTES:
- THIS SUBDIVISION LIES WITHIN THE LIMITS ESTABLISHED FOR ZONE "X" (NO SHADING) ACCORDING TO FIRM MAP NUMBER 28089C0395 F, EFFECTIVE MARCH 10, 2010.
 - DIMENSIONS ALONG CURVES ARE CHORD DISTANCES.
 - SURVEY CLASSIFICATION "B".
 - REFERENCE MERIDIAN: WEST LINE OF THE VILLAGES OF CAROLINE III, PLAT CABINET D - SLIDE 112.
 - IRON PINS SET AT ALL LOT CORNERS.
 - INDICATES SET IRON REFERENCE PIN WHICH IS AT THE REAR SETBACK LINE (20') ON EACH SIDE LOT LINE DISTANCES SHOWN ARE FROM REAR LOT CORNER TO S.I.P.
 - AREA = 26.947 ACRES, MORE OR LESS.
- F.I.P. = DENOTES FOUND 1/2" IRON PIN
 S.I.P. = DENOTES SET 1/2" IRON PIN

RIGHT OF WAY CURVE DATA

① Δ = 36°22'34" D = 4.51471' R = 1269.09' L = 805.56'	② Δ = 36°22'34" D = 4.69988' R = 1219.09' L = 773.97'	③ Δ = 35°40'58" D = 28.64789' R = 200.00' L = 124.56'	④ Δ = 35°40'58" D = 22.91831' R = 250.00' L = 155.70'
⑤ Δ = 24°47'45" D = 28.64789' R = 200.00' L = 85.39'	⑥ Δ = 24°47'45" D = 32.74045' R = 250.00' L = 106.74'	⑦ Δ = 51°43'08" D = 25.46789' R = 225.00' L = 203.10'	⑧ Δ = 51°43'08" D = 9.18732' R = 175.00' L = 157.97'
⑨ Δ = 20°28'21" D = 25.46479' R = 225.00' L = 80.40'	⑩ Δ = 20°28'21" D = 32.74045' R = 250.00' L = 62.55'	⑪ Δ = 04°30'11" D = 9.98448' R = 130.00' L = 45.19'	⑫ Δ = 04°30'11" D = 9.18732' R = 175.00' L = 49.12'
⑬ Δ = 06°49'48" D = 16.37022' R = 350.00' L = 41.72'	⑭ Δ = 06°49'48" D = 14.32395' R = 400.00' L = 47.68'	⑮ Δ = 43°18'22" D = 28.64789' R = 200.00' L = 151.17'	⑯ Δ = 43°18'22" D = 38.19719' R = 150.00' L = 113.38'
⑰ Δ = 51°04'24" D = 54.56741' R = 105.60' L = 221.61'	⑱ Δ = 51°04'24" D = 104.17415' R = 49.03' L = 87.95'	⑲ Δ = 73°34'46" D = 44.07368' R = 130.00' L = 166.95'	⑳ Δ = 73°34'46" D = 71.61973' R = 80.00' L = 102.74'
㉑ Δ = 42°19'29" D = 18.09859' R = 200.00' L = 221.61'	㉒ Δ = 42°19'29" D = 14.32395' R = 250.00' L = 184.68'	㉓ Δ = 12°35'52" D = 14.32395' R = 400.00' L = 87.95'	㉔ Δ = 12°35'52" D = 12.73240' R = 450.00' L = 98.94'



TYPICAL LOT DETAIL
 NOTE: 15' MINIMUM DISTANCE BETWEEN BUILDINGS.
 REFERENCE COVENANTS FOR LOT SPECIFIC SETBACKS



**CAMDEN POINTE II OF CAROLINE
SITUATED IN THE
NORTHWEST 1/4 OF THE NORTHEAST 1/4 AND THE
NORTHEAST 1/4 OF THE NORTHWEST 1/4 OF SECTION 14
AND THE SOUTHWEST 1/4 OF THE SOUTHEAST 1/4 AND THE
SOUTHEAST 1/4 OF THE SOUTHWEST 1/4 OF
SECTION 11, TOWNSHIP 8 NORTH - RANGE 1 EAST
MADISON COUNTY, MISSISSIPPI**

PLATTED & SURVEYED BY
H D LANG AND ASSOCIATES, INC.
ENGINEERS / LAND SURVEYORS
4099 NORTH STATE STREET
JACKSON, MISSISSIPPI
(601) 362-4886

**SURVEYOR'S CERTIFICATE
STATE OF MISSISSIPPI
COUNTY OF MADISON**

I, Donald L. McDonald, Professional Surveyor, do hereby certify that at the request of the undersigned Owner, I have subdivided and platted the following described land being situated in the Northwest 1/4 of the Northeast 1/4 and the Northeast 1/4 of the Northwest 1/4 of Section 14 and in the Southwest 1/4 of the Southeast 1/4 and the Southeast 1/4 of the Southwest 1/4 of Section 11, T8N-R1E, Madison County, Mississippi:

Begin at an existing 1/2" iron pin marking the Northwest corner of The Villages of Caroline, a subdivision according to the map or plat thereof, on file and of record in the office of the Chancery Clerk of Madison County at Canton, Mississippi, as now recorded in Plat Cabinet D at Slides 91 and 92 and run thence South along the West line of said The Villages of Caroline for a distance of 277.42 feet to an existing 1/2" iron pin; run thence South 38 degrees 55 minutes 27 seconds West along said West line of The Villages of Caroline for a distance of 40.62 feet to an existing 1/2" iron pin marking the Southwest corner thereof; said point also being the Northwest corner of The Villages of Caroline III, a subdivision according to the map or plat thereof, on file and of record in the aforesaid Chancery Clerk's office, as now recorded in Plat Cabinet D at Slide 112; run thence along the West line of said The Villages of Caroline III the following bearings and distances: South 35 degrees 43 minutes 56 seconds West for a distance of 92.30 feet to an existing 1/2" iron pin; South 31 degrees 17 minutes 42 seconds West for a distance of 92.48 feet to an existing 1/2" iron pin; South 26 degrees 51 minutes 12 seconds West for a distance of 92.48 feet to an existing 1/2" iron pin; South 22 degrees 32 minutes 42 seconds West for a distance of 86.92 feet to an existing 1/2" iron pin; South 18 degrees 22 minutes 13 seconds West for a distance of 86.92 feet to an existing 1/2" iron pin; South 14 degrees 11 minutes 44 seconds West for a distance of 86.92 feet to an existing 1/2" iron pin; South 09 degrees 48 minutes 43 seconds West for a distance of 95.62 feet to an existing 1/2" iron pin; South 04 degrees 52 minutes 26 seconds West for a distance of 79.39 feet to an existing 1/2" iron pin marking the Northeast corner of Camden Pointe of Caroline, a subdivision according to the map or plat thereof, on file and of record in the aforesaid Chancery Clerk's office, as now recorded in Plat Cabinet F at Slides 12A and 12B; leaving said West line of The Villages of Caroline III, run thence along the North line of said Camden Pointe of Caroline the following bearings and distances: North 87 degrees 45 minutes 21 seconds West for a distance of 151.10 feet to an existing 1/2" iron pin on the arc of a 4.69988 degree curve bearing to the right having a central angle of 36 degrees 22 minutes 34 seconds and a radius of 1,219.09 feet; run thence northeasterly along the arc of said curve an arc length of 31.58 feet to an existing 1/2" iron pin; said curve having a chord bearing of North 02 degrees 59 minutes 10 seconds East and a chord distance of 31.58 feet; leaving the arc of said curve, run thence South 89 degrees 48 minutes 33 seconds West for a distance of 324.35 feet to an existing 1/2" iron pin; South 64 degrees 56 minutes 41 seconds West for a distance of 90.14 feet to the Northwest corner thereof; leaving said North line of Camden Pointe of Caroline, run thence North 31 degrees 18 minutes 11 seconds West for a distance of 34.86 feet to a point; run thence North 72 degrees 02 minutes 11 seconds West for a distance of 38.74 feet to a point; run thence South 80 degrees 16 minutes 51 seconds West for a distance of 89.71 feet to a point; run thence North 79 degrees 01 minutes 08 seconds West for a distance of 45.25 feet to a point; run thence North 51 degrees 50 minutes 56 seconds West for a distance of 42.09 feet to a point; run thence North 64 degrees 35 minutes 22 seconds West for a distance of 46.52 feet to a point; run thence North 49 degrees 39 minutes 34 seconds West for a distance of 19.21 feet to a point; run thence North 52 degrees 42 minutes 30 seconds West for a distance of 60.33 feet to a point; run thence North 67 degrees 53 minutes 07 seconds West for a distance of 45.39 feet to a point; run thence North 73 degrees 14 minutes 09 seconds West for a distance of 76.51 feet to a point; run thence North 38 degrees 40 minutes 05 seconds West for a distance of 42.80 feet to a point; run thence North 08 degrees 50 minutes 33 seconds West for a distance of 55.48 feet to a point; run thence North 03 degrees 56 minutes 58 seconds West for a distance of 29.06 feet to a point; run thence North 24 degrees 42 minutes 48 seconds West for a distance of 42.60 feet to a point; run thence North 39 degrees 37 minutes 48 seconds West for a distance of 42.07 feet to a point; run thence North 31 degrees 38 minutes 31 seconds West for a distance of 54.89 feet to a point; run thence North 24 degrees 52 minutes 46 seconds West for a distance of 30.59 feet to a point; run thence North 13 degrees 31 minutes 49 seconds West for a distance of 41.92 feet to a point; run thence North 05 degrees 15 minutes 24 seconds West for a distance of 43.27 feet to a point; run thence North 05 degrees 07 minutes 25 seconds East for a distance of 47.88 feet to a point; run thence North 18 degrees 46 minutes 40 seconds East for a distance of 40.83 feet to a point; run thence North 40 degrees 27 minutes 19 seconds East for a distance of 41.53 feet to a point; run thence North 70 degrees 11 minutes 50 seconds East for a distance of 42.50 feet to a point; run thence North 79 degrees 08 minutes 44 seconds East for a distance of 44.35 feet to a point; run thence North 72 degrees 24 minutes 45 seconds East for a distance of 46.88 feet to a point; run thence North 71 degrees 54 minutes 48 seconds East for a distance of 136.59 feet to a point; run thence North 71 degrees 33 minutes 46 seconds East for a distance of 90.02 feet to a point; run thence North 72 degrees 49 minutes 06 seconds East for a distance of 86.81 feet to a point; run thence North 79 degrees 58 minutes 29 seconds East for a distance of 34.81 feet to a point; run thence North 81 degrees 50 minutes 40 seconds East for a distance of 95.25 feet to a point; run thence South 82 degrees 48 minutes 00 seconds East for a distance of 44.89 feet to a point; run thence South 70 degrees 33 minutes 28 seconds East for a distance of 73.63 feet to a point; run thence South 61 degrees 39 minutes 34 seconds East for a distance of 94.18 feet to a point; run thence South 61 degrees 05 minutes 42 seconds East for a distance of 51.69 feet to a point; run thence South 72 degrees 04 minutes 39 seconds East for a distance of 44.66 feet to a point; run thence South 87 degrees 43 minutes 45 seconds East for a distance of 39.14 feet to a point; run thence North 09 degrees 12 minutes 18 seconds East for a distance of 36.78 feet to a point; run thence North 31 degrees 54 minutes 05 seconds West for a distance of 87.71 feet to a point; run thence North 26 degrees 05 minutes 29 seconds West for a distance of 47.82 feet to a point; run thence North 82 degrees 49 minutes 54 seconds East for a distance of 66.64 feet to a point; run thence North 11 degrees 25 minutes 32 seconds West for a distance of 19.98 feet to a point; run thence North 26 degrees 50 minutes 17 seconds West for a distance of 14.05 feet to a point; run thence South 87 degrees 02 minutes 49 seconds West for a distance of 38.00 feet to a point; run thence North 62 degrees 35 minutes 24 seconds West for a distance of 80.89 feet to a point; run thence North 64 degrees 05 minutes 29 seconds West for a distance of 47.55 feet to a point; run thence North 07 degrees 08 minutes 31 seconds West for a distance of 30.28 feet to a point; run thence North 07 degrees 26 minutes 58 seconds East for a distance of 47.43 feet to a point; run thence North 27 degrees 07 minutes 17 seconds East for a distance of 40.75 feet to a point; run thence North 44 degrees 45 minutes 33 seconds East for a distance of 33.45 feet to a point; run thence North 31 degrees 58 minutes 57 seconds East for a distance of 23.42 feet to a point; run thence North 02 degrees 09 minutes 43 seconds West for a distance of 51.91 feet to a point; run thence North 53 degrees 45 minutes 30 seconds East for a distance of 179.75 feet to a set 1/2" iron pin; run thence North 12 degrees 57 minutes 32 seconds East for a distance of 55.35 feet to a set 1/2" iron pin; run thence North 21 degrees 47 minutes 21 seconds East for a distance of 60.13 feet to a set 1/2" iron pin; run thence North 27 degrees 13 minutes

56 seconds East for a distance of 101.83 feet to a set 1/2" iron pin; run thence North 31 degrees 34 minutes 57 seconds East for a distance of 69.15 feet to a set 1/2" iron pin; run thence North 42 degrees 58 minutes 38 seconds East for a distance of 81.75 feet to a set 1/2" iron pin; run thence North 56 degrees 29 minutes 22 seconds East for a distance of 29.59 feet to a set 1/2" iron pin; run thence South 33 degrees 30 minutes 38 seconds East for a distance of 109.65 feet to a set 1/2" iron pin; run thence North 56 degrees 29 minutes 22 seconds East for a distance of 102.61 feet to a set 1/2" iron pin on the western right-of-way line of Hampton Crossing; said point also being on the arc of a 8.19167 degree curve bearing to the left having a central angle of 22 degrees 41 minutes 00 seconds and a radius of 699.44 feet; run thence southeasterly along said western right-of-way line of Hampton Crossing and along the arc of said curve an arc length of 276.90 feet to an existing 1/2" iron pin on the North line of Lot 397, Hampton Chase, a subdivision according to the map or plat thereof, on file and of record in the aforesaid Chancery Clerk's office, as now recorded in Plat Cabinet E at Slides 21B and 22A; said curve having a chord bearing of South 46 degrees 39 minutes 45 seconds East and a chord distance of 275.10 feet; leaving the arc of said curve, run thence along the West line of said Hampton Chase the following bearings and distances: South 86 degrees 40 minutes 19 seconds West for a distance of 84.00 feet to an existing 1/2" iron pin; South 47 degrees 43 minutes 44 seconds West for a distance of 84.72 feet to an existing 1/2" iron pin; South 27 degrees 15 minutes 23 seconds West for a distance of 119.39 feet to an existing 1/2" iron pin; South 24 degrees 27 minutes 45 seconds East for a distance of 234.29 feet to an existing 1/2" iron pin; run thence East for a distance of 3.20 feet to the POINT OF BEGINNING, containing 26.947 acres, more or less.

Witness my signature this the _____ day of _____, 2015.

Donald L. McDonald, Professional Surveyor

**SURVEYOR'S CERTIFICATE OF COMPLIANCE
STATE OF MISSISSIPPI
COUNTY OF MADISON**

I, Donald L. McDonald, Professional Surveyor, do hereby certify that the monuments and markers shown hereon are in place on the ground and the plat and plan shown and described hereon are a true and correct representation of a survey to the accuracy designated in the subdivision regulations for Madison County, Mississippi.

Witness my signature this the _____ day of _____, _____

Donald L. McDonald, Professional Surveyor

**CERTIFICATE AND DEDICATION OF OWNER
STATE OF MISSISSIPPI
COUNTY OF MADISON**

I, Mark S. Jordan, President of Caroline, LLC, a Mississippi Limited Liability Company do hereby certify that the aforementioned is the owner of the land described in the foregoing certificate of Donald L. McDonald, Professional Surveyor, and that as President of said Caroline, LLC, a Mississippi Limited Liability Company, has caused the same to be subdivided and platted as shown hereon, and hereby adopt this plat of subdivision as the free act and deed of said corporation and has designated the same as Camden Pointe II Of Caroline and dedicates the street rights-of-way and drainage easements as shown hereon for public use forever.

All utilities, utility easements, and other easements are as designated and defined hereon and in the Declaration of Lake Caroline, as recorded in Deed Book 696 at Page 609, reference to which is hereby made.

Witness my signature this the _____ day of _____, _____

Caroline, LLC, a Mississippi Limited Liability Company

By: _____
Mark S. Jordan, President

RESERVATION

The Owner as named below, for itself, its successors and assigns, does hereby except from the dedication of the property and does hereby reserve the exclusive right to construct, reconstruct, alter, maintain and operate a water and sewer distribution and collection system, together with a natural gas distribution system, TV cable or other communication cable and appurtenances, except telephonic, in all of the easements, and in rights-of-way, streets, avenues and boulevards shown on this plat; provided, however, the exercise of rights herein reserved in said easements, rights-of-way, streets, avenues and boulevards shall first be approved by the Board of Supervisors of Madison County shall be the acknowledgement of and approval of the reservation of said rights.

Owner does hereby expressly retain ownership for itself, its successors and assigns, any and all sewer lines, water lines, connections, taps, manholes, pipes, valves, fittings and any and all other items that may be used in connection with or attached to said water or sewer distribution and collection system, and any and all of such lines, connections, fittings, and all other items that may be used in connection with or attached to or used in said natural gas distribution system, or TV cable, or other communication cable system, and appurtenances, except telephonic, and placed in, on, or under said easements, rights-of-way, streets, avenues, boulevards, private drive, and common areas as shown on said plat.

Witness my signature this the _____ day of _____, _____

Caroline, LLC, a Mississippi Limited Liability Company

By: _____
Mark S. Jordan, President

**ACKNOWLEDGEMENT
STATE OF MISSISSIPPI
COUNTY OF HINDS**

Personally appeared before me, the undersigned officer in and for the jurisdiction aforesaid, the within named Mark S. Jordan, who acknowledged to me that he is President of Caroline, LLC, a Mississippi Limited Liability Company, the owner, who acknowledged to me that he signed and delivered this plat and the certificates thereon as his own act and deed, for and on behalf of said Caroline, LLC, a Mississippi Limited Liability Company, after being authorized so to do, and Donald L. McDonald, Professional Surveyor, who acknowledged to me that he signed and delivered this plat and the certificates thereon as his own act and deed, on the day and year herein mentioned.

Given under my hand and seal of office this the _____ day of _____, _____

Notary Public My Commission Expires: _____

**COUNTY ENGINEER'S RECOMMENDATION
STATE OF MISSISSIPPI
COUNTY OF MADISON**

I have examined this plat and find it conforms to all conditions set forth on the preliminary plat as approved by the Board of Supervisors of Madison County, Mississippi and thus recommend final approval.

By: _____
Rudy Warnock, County Engineer

**APPROVAL OF THE BOARD OF SUPERVISORS
STATE OF MISSISSIPPI
COUNTY OF MADISON**

I hereby certify that this is a true copy and that this plat was approved by the Board of Supervisors of Madison County in session on the _____ day of _____, _____

Madison County Board of Supervisors

By: _____
Karl M. Banks, Board President

**CERTIFICATE OF COMPARISON
STATE OF MISSISSIPPI
COUNTY OF MADISON**

We, Ronny Lott, Chancery Clerk and Donald L. McDonald, Professional Surveyor, do hereby certify that we have carefully compared this plat of Camden Pointe II Of Caroline with the original thereof, as made by said Donald L. McDonald, Professional Surveyor, and find it to be a true and correct copy of said map or plat.

Given under my hand and seal of office this the _____ day of _____, _____

Donald L. McDonald, PS Ronny Lott, Chancery Clerk

By: _____, D.C.

**FILING AND RECORDATION
STATE OF MISSISSIPPI
COUNTY OF MADISON**

I, Ronny Lott, Clerk of the Chancery Court in and for said County and State, do hereby certify that the final plat of Camden Pointe II Of Caroline was filed for record in my office on this the _____ day of _____, _____, and was duly recorded in Plat Cabinet _____ at Slides _____ and _____ of the records of maps and plats of land in Madison County, Mississippi.

Given under my hand and seal of office this the _____ day of _____, _____

Ronny Lott, Chancery Clerk By: _____, D.C.